

SO.No.

| NPS | DN | d | L | L1 | W | ASME or JPI CLASS 150RF | | | | | | ACTUATOR CODE FPMK- | B1 | B2 | B3 | B4 | H | APPROX. MASS (kg) | Q'TY | |
|-------|-----|-----|-----|-----|-----|-------------------------|-------|---|----|------|-------|---------------------|-------|-----|-----|----|-----|-------------------|-------|---|
| | | | | | | D | C | n | h | t | g | | | | | | | | | f |
| 2-1/2 | 65 | 64 | 190 | 87 | 168 | 178 | 139.7 | 4 | 19 | 18.0 | 104.6 | 1.6 | 010SS | 178 | 140 | 56 | 122 | 425 | 22.0 | |
| 3 | 80 | 76 | 203 | 97 | 194 | 190 | 152.4 | 4 | 19 | 19.5 | 127.0 | 1.6 | 010SS | 178 | 140 | 56 | 122 | 435 | 25.0 | |
| 4 | 100 | | | | | | | | | | | | 010SS | 178 | 140 | 56 | 122 | 467 | 37.0 | |
| 4 | 100 | 102 | 229 | 116 | 233 | 229 | 190.5 | 8 | 19 | 24.0 | 157.2 | 1.6 | 030SS | 197 | 152 | 63 | 134 | 502 | 39.5 | |
| 5 | 125 | | | | | | | | | | | | 030SS | 197 | 152 | 63 | 134 | 537 | 58.5 | |
| 5 | 125 | 127 | 356 | 148 | 281 | 254 | 215.9 | 8 | 22 | 24.0 | 185.6 | 1.6 | 060SS | 272 | 200 | 73 | 199 | 659 | 76.0 | |
| 6 | 150 | | | | | | | | | | | | 060SS | 272 | 200 | 73 | 199 | 680 | 87.0 | |
| 6 | 150 | 152 | 394 | 173 | 321 | 279 | 241.3 | 8 | 22 | 25.5 | 215.9 | 1.6 | 080SS | 272 | 200 | 73 | 199 | 680 | 87.0 | |
| 8 | 200 | | | | | | | | | | | | 060SS | 272 | 200 | 73 | 199 | 740 | 128.0 | |
| 8 | 200 | 203 | 457 | 207 | 399 | 343 | 298.4 | 8 | 22 | 28.5 | 269.7 | 1.6 | 080SS | 272 | 200 | 73 | 199 | 740 | 128.0 | |

NOTE

配管接続部のRF面は平滑加工になります。

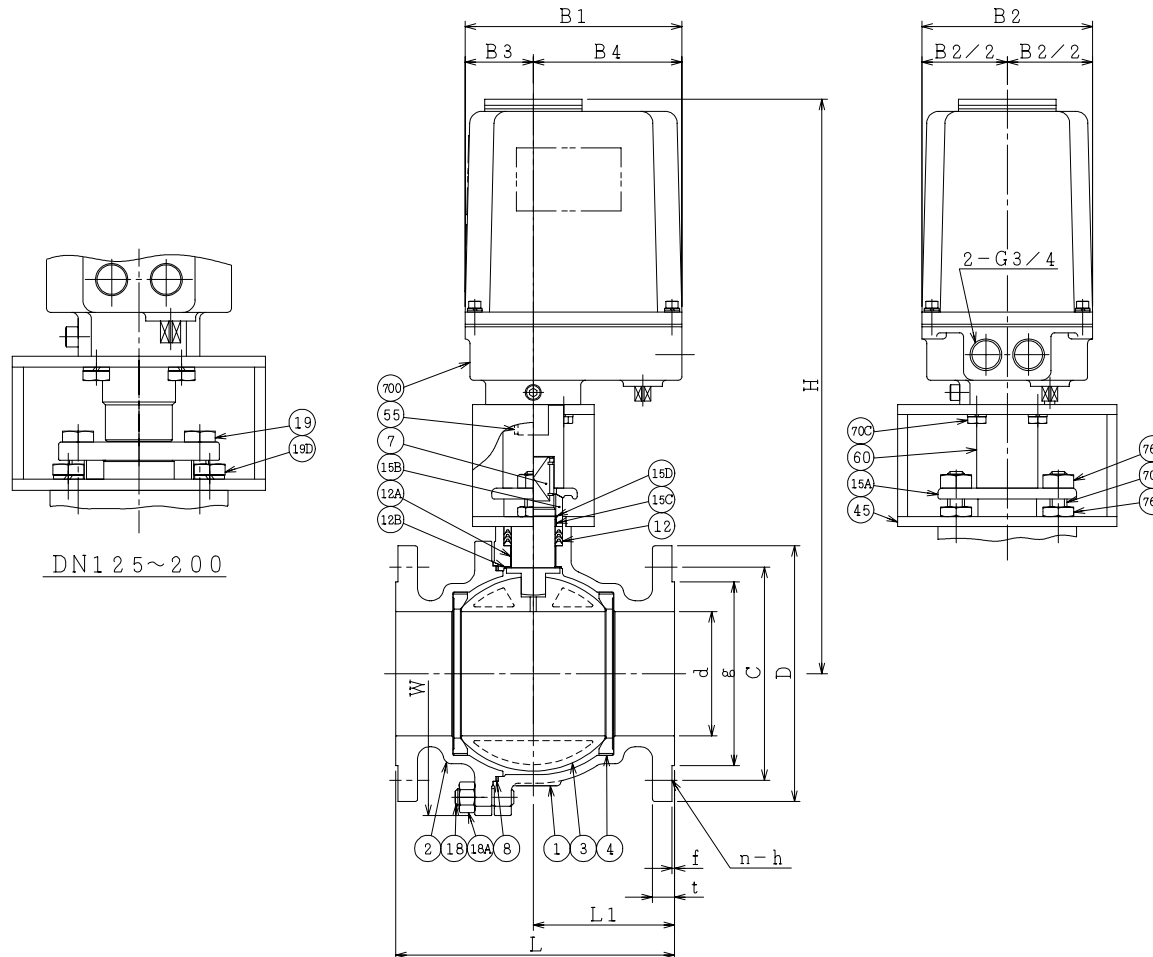
The finishes of contact faces of end flanges:Smooth

| ※ | シート材料 | SEAT MATERIAL |
|-----|--------|----------------------------------|
| NTF | R.PTFE | (NEW PTFE) |
| NCF | R.PTFE | (カーボンファイバ入り CARBON FIBER FILLED) |
| NGR | R.PTFE | (ガラスファイバ入り GLASS FIBER FILLED) |

NOTE

(*1) ASTM A351

(*2) NEW PTFE



REMARK: 部番3はDN125~200が破線の形状になります。
The shape of DN125~200 ball is as shown by imaginary line.

| | | | | | |
|-----|-----------|---------------|------------------------|------|-----------|
| 700 | 電動操作機 | ACTUATOR | | 1S | |
| 76B | 六角ナット | NUT | SUS304 | 2 | DN65~100 |
| 76A | 六角ナット | NUT | SUS304 | 2 | DN65~100 |
| 70F | 長ねじボルト | STUD BOLT | SUS304 | 2 | DN65~100 |
| 70C | 六角ボルト | BOLT | SS400 | 4 | |
| 60 | ジョイント | COUPLING | SS400 | 1 | |
| 55 | キー | KEY | S45C | 1 | |
| 45 | ヨーク | YOKE | SS400 | 1 | |
| 19D | 六角ボルト | BOLT | SUS304 | 4 | DN125~200 |
| 19 | 六角ボルト | BOLT | SUS304 | 2 | DN125~200 |
| 18A | ナット | NUT | SUS303 | 6~12 | |
| 18 | 植込みボルト | STUD BOLT | SUS304 | 6~12 | |
| 15D | ワイヤースプリング | WIRE SPRING | SUS304 | 1 | |
| 15C | ステム軸受 | BEARING | NTF | 1 | (*2) |
| 15B | パッキン押え輪 | GLAND | SUS304 | 1 | |
| 15A | パッキン押え | GLAND FLANGE | SCS13A | 1 | |
| 12B | スラスト座金 | THRUST WASHER | NTF | 1 | (*2) |
| 12A | 軸受 | BEARING | NTF | 1 | (*2) |
| 12 | パッキン | PACKING | NTF | 1S | (*2) |
| 8 | ガスケット | GASKET | NTF | 1 | (*2) |
| 7 | ステム | STEM | SUS304 | 1 | |
| 4 | シート | SEAT | * | 2 | |
| 3 | ボール | BALL | SUS304 or SCS13A | 1 | |
| 2 | フランジ | CAP | CF8 | 1 | (*1) |
| 1 | 本体 | BODY | CF8 | 1 | (*1) |

| NO. | PART NAME | MATERIAL | Q'TY | REMARKS |
|----------|-------------|--|---------------------|---------|
| ACTION | | TITLE 電動操作式ボール弁 ELECTRIC OPERATED BALL VALVE (CL150) | | |
| APPROVED | K. Shimura | CODE NO. | FPMK4107NB-※-65/200 | |
| CHECKED | Y. Kusumoto | DRAWING | FB2682-064A | |
| DRAWN | S.KITAGAWA | NO. | | REV. 0 |
| DATE | 2013. 4.25 | | | |

NDV NIPPON DAIYA VALVE CO., LTD.
TOKYO JAPAN

REV. 0
DATE 2013. 4.25
DRAWN S.KITAGAWA

REV. NO.
DATE